

Utility Configuration Instructions

1. Download the .zip file.
2. Extract the contents of the .zip file.
3. Double click file “BAPI.DeviceConfiguration.exe” to run the utility. The window at right opens (Fig 1).
4. Connect a USB cable between your computer and the USB-C connector on your sensor. The data for the Serial Settings and Firmware will populate the Device Utility Information Window as shown in Fig 2.

Note: The sensor does not need to have power connected for the configuration. The USB cable will provide the necessary power.

5. Set the device address using the DIP switches on the sensor. See the Installation & Operating Instructions for details.
6. Edit the values in the Serial Settings section of the Device Utility Information Window (Fig 2) for your application. If you select BACnet as the Output Protocol, then the Protocol Settings section below the Serial Settings will be shown. The Protocol Settings section only shows if BACnet is selected as the Output Protocol.

Reminder: All devices on the same RS485 line must use the same Baud Rate.

7. Click Submit to save your changes to the sensor.
8. Click Reload to revert any settings that have not been submitted.
9. Clicking Advanced Options opens the Advanced Options window (Fig 3). Click on the dropdown for Select Object to choose one of the available objects for that sensor. Edit the Object Name and COV Delta fields if desired.
10. Click Submit to save your changes to the sensor before selecting the next object.
11. When completed with the last object, click Submit and then Cancel to return to the main window.
12. When all changes are submitted (saved), disconnect the USB cable.

Note: If the sensor is powered while changes are made, power must be cycled for the changes to take effect.

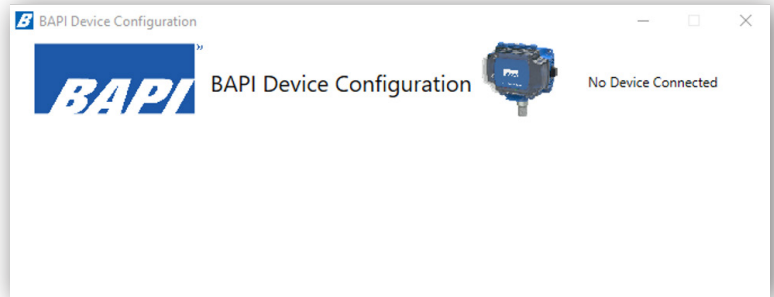


Fig. 1: Device Utility Initial Window

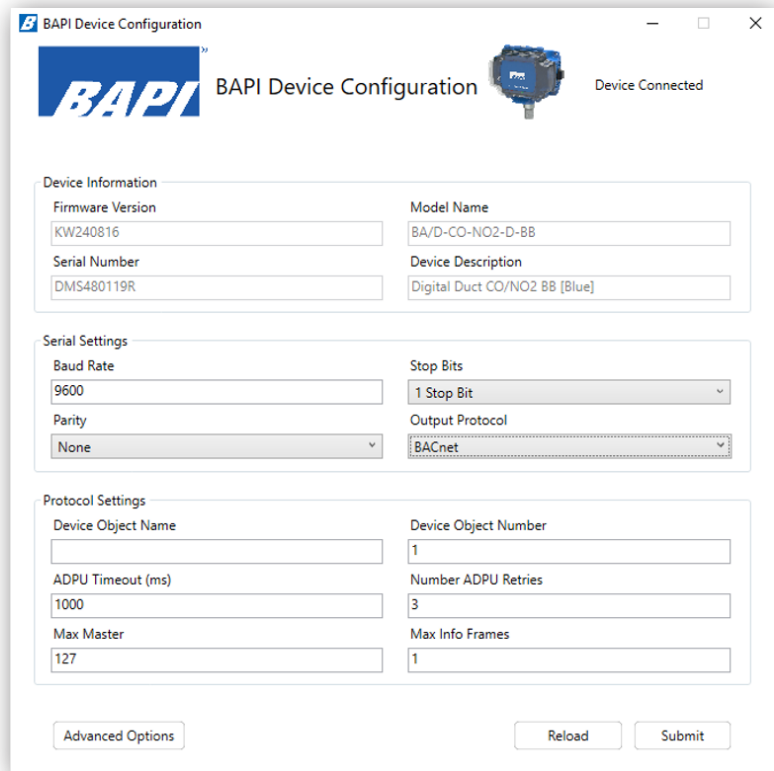


Fig. 2: Device Utility Information Window

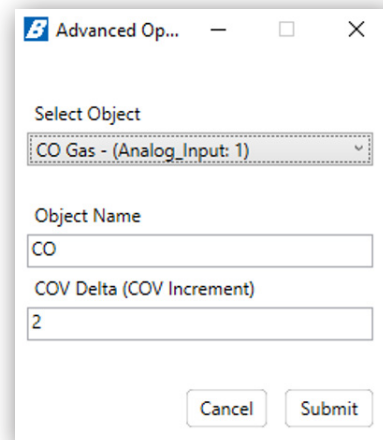


Fig. 3: Advanced Options Utility Window